



ZT 4

Hydraulic operator for swing gates.
Residential and condominium use.

Uniball Bracket



- **Suitable for residential and condominium use** with leaf length up to 3 m. Maximum reliability thanks to the sturdiness of the operator.
- **Versions available:**
ZT 4 SF - without lock for leaf length up to 3 m.
ZT B - with lock in opening/closing position for leaf length up to 1,8 m.
- **Anti-crush system** with very sensitive bypass valves calibrated during installation. This immediately cuts the hydraulic pressure in the event of obstacles to ensure maximum system safety.

■ **Front and rear mountings** to enable screw assembly also on wood, PVC and aluminium gates.

■ **Manual key release** located on the upper part of the operator in the event of mains power supply failure.

■ The articulated fork rear flange ensures flexible and sturdy assembly on the pillar.

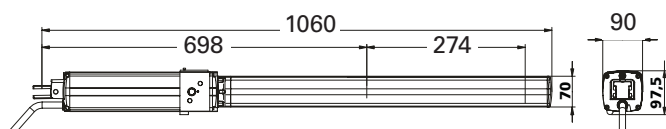
■ **The neoprene power supply cable** is specifically suited to mobile applications in outdoor environments.

TECHNICAL DATA version B - SF

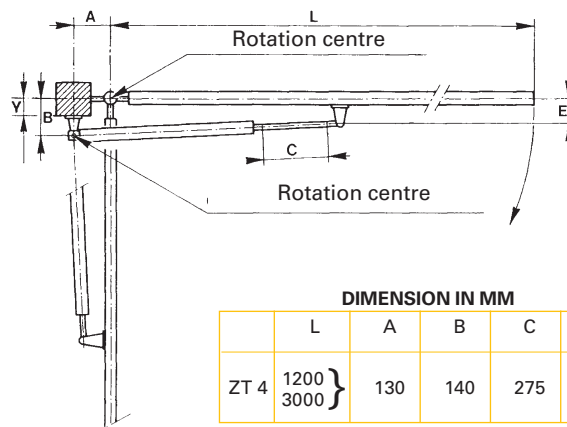
POWER SUPPLY	230 Vac - 50/60 Hz
ABSORBED POWER	250 W
MAX. THRUST FORCE	3850 N
ROD ENTRY TIME	17 sec.
ROD EXIT TIME	20 sec.
OPERATING TEMPERATURE	-20°C to +70°C
MAX. WING WIDTH	3,0 m (SF) - 1,8 m (B)
STANDARD MAX. ROD STROKE	275 mm
NUMBER OF CYCLES	200 cycles/day
KEY RELEASE	YES
ANTI-CRUSH SYSTEM	YES
OVERLOAD TEMPERATURE	120° C
PROTECTION CLASS	IP 55



OPERATOR DIMENSIONS



OPERATOR POSITIONING



DIMENSION IN MM					
	L	A	B	C	Y(max)
ZT 4	1200 3000	130	140	275	80

DESCRIPTION

DESCRIPTION	Max. leaf width	CODE
ZT 4 B Hydraulic operator with lock in opening/closing position, electric lock NOT required	1.8 m	41006/001
ZT 4 SF Hydraulic operator without lock, electric lock required	3.0 m	41006/003
SET ZT 4 B Set composed of: two hydraulic ZT 4 B operators with hydraulic lock in opening/closing position, one T1E electronic control unit	1.8 m	41006/805

DESCRIPTION OF OPTIONAL ACCESSORIES

DESCRIPTION OF OPTIONAL ACCESSORIES	CODE
433,92 MHz radioreceiver Memory System	41923/009
TR2 - 433.92 MHz twin-channel transmitter	41903/002
ER4N - Pair of photocells	41812/001
PC12E - Key switch for wall mounting	41830/007
CAL - Aluminium column for the ER4N photocells	41812/050
433,92 MHz antenna	41929/001
ES3 - Electric lock complete with ground striker plate (for gate leaf longer than 1,8 m up to 3 m) CL series cylinder required	41080/008
CL1 - "DEAD HEAD" single cylinder	41080/005
CL2 - "DEAD HEAD" double cylinder	41080/004

IDEAL INSTALLATION

IDEAL INSTALLATION	Q.ty	CODE
SET ZT 4 B Set composed of: two hydraulic ZT 4 B operators with hydraulic lock in opening/closing position, one T1E electronic control unit	1	41006/805
ER4N - Pair of photocells	1	41812/001
One TR2 - 433,92 MHz twin-channel transmitter	1	41903/002
Unico 433,92 MHz Memory System radio receiver complete with antenna	1	41923/009
ET20N - 230 V flashing light	1	41840/006

NOTE: for control and safety devices and installation accessories, see section "Electronic devices and installation accessories" in this catalogue (consult the index).